

# Consoles 121

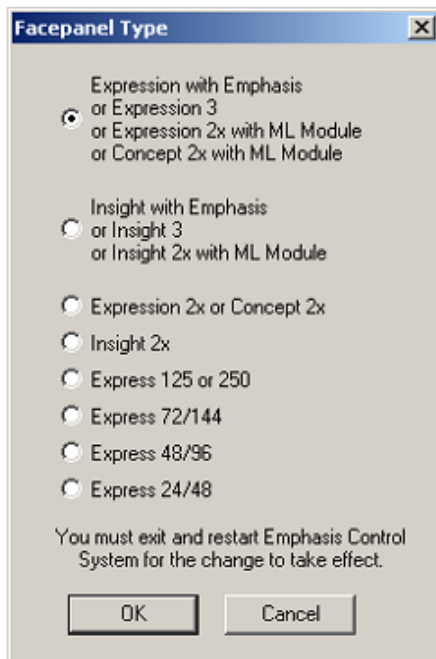
## Emphasis Component Defaults

### Console Application Defaults

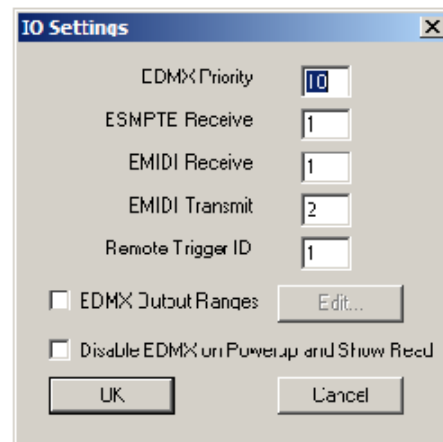
The following default settings are for reference only. They are not intended as instruction on how to change settings.

The following can be set from either Emphasis Visualization or Emphasis Console. In Visualization these can be set from the EMPHASIS mode, then Setup. In Console, these can be found in the main Emphasis Console Application box. They are set under their headings in Options. **Visualization should be the application of choice for setting these parameters.**

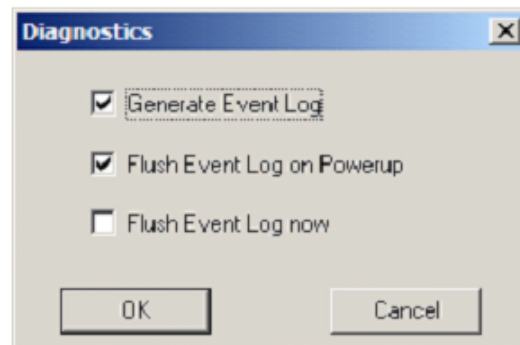
#### Facepanel Type



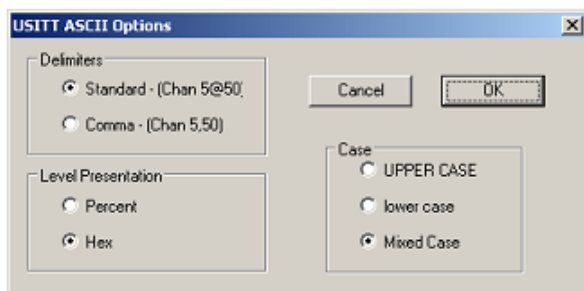
#### IO



#### Diagnostics

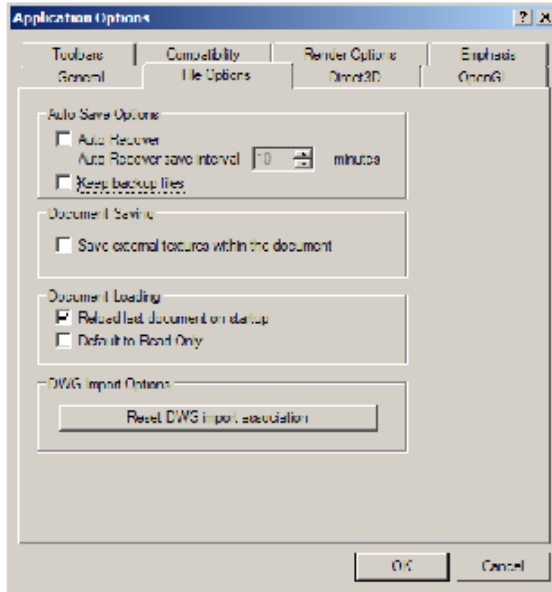


#### ASCII Options

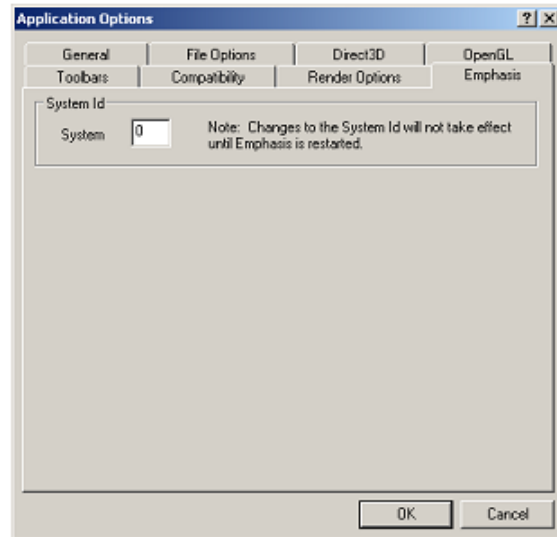


The following are only set from Visualization. These can be found in the Emphasis Mode, then Options, then Application Options. Most settings are defaults of WYSIWYG, only the ones specific to Emphasis will be covered here.

### File Options Tab

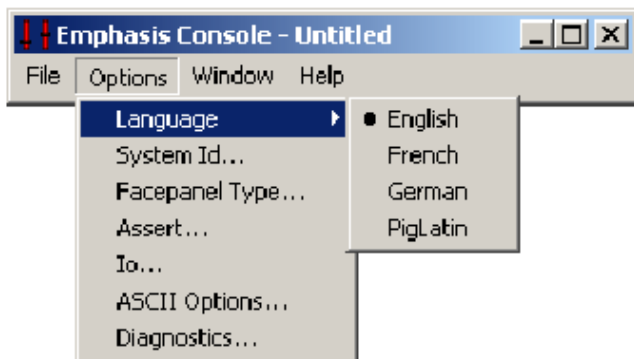


### Emphasis Tab

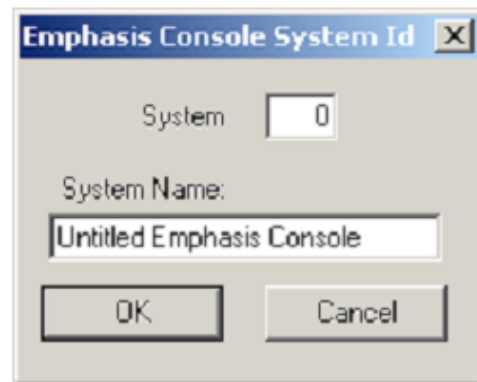


The following are set from the Emphasis Console Application Only. These can be found in the main Emphasis Console Application box. They are set under their headings in Options.

### Language



### System ID



## Expression Facepanel Defaults

### ETCNet2

Emphasis RPU System ID A .....	0
Emphasis RPU System ID B .....	-
IP Address.....	10.101.45.101
Gateway Address .....	10.101.45.101
Subnet Mask .....	255.255.0.0
Display Processor List.....	Disabled
Label.....	Defaults to the type of console it is in
Use Configured IP Parameters .....	Disabled

### DMX

*Local DMX/EDMX input/output enabled*

DMX Output Port Timing.....	Max
DMX Output Port 1 Start Channel .....	1
DMX Output Port 1 Channel Count .....	512
DMX Output Port 2 Start Channel .....	513
DMX Output Port 2 Channel Count .....	512
DMX Output Port 3 Start Channel .....	1025
DMX Output Port 3 Channel Count .....	512
DMX Output Port 4 Start Channel .....	1537
DMX Output Port 4 Channel Count .....	512
DMX Input Port Start Channel Start Number .....	10001
DMX Input Port Channel Count .....	512
DMX Input Port .....	Disabled
DMX Input Port Priority.....	10

### MIDI

MIDI Input Port EMIDI ID.....	1
MIDI Output Port EMIDI ID... ..	2

### SMPTE

SMPTE Input Port ESMPTE ID .....	1
SMPTE Input Port Frames per Second .....	30
SMPTE Start-of-Loop (HH:MM:SS:FF) .....	0:0:0:0
SMPTE End-of-Loop (HH:MM:SS:FF) .....	23:59:59:29

### Remote Macro

Remote Macros 1 - 8... ..	Macro ID 1901 - 1908 .....	System ID 0
Remote Macros 9 -16.. ..	Macro ID 1909 - 1916 .....	System ID 0
Remote Macros 17 - 24.....	Macro ID 1917 - 1924 .....	System ID 0
Remote Macros 25 - 32.....	Macro ID 1925 - 1932 .....	System ID 0

### Lighting Playback Controller

Lighting playback controller mode .....	Disabled
---	----------

### Serial Button Protocol

Use serial port for button protocol .....	Disabled
Baud Rate .....	115200

## Express Facepanel Defaults

### ETCNet2

Emphasis RPU System.....	0
IP Address.....	10.101.45.101
Gateway Address.....	10.101.45.101
Subnet Mask.....	255.255.0.0
Display Processor List.....	Enabled
Label.....	Defaults to the type of console it is in
Use Configured IP Parameters.....	Disabled

### DMX

*Local DMX/EDMX input/output enabled*

DMX Output Port Timing.....	Max
DMX Output Port 1 Start Channel.....	1
DMX Output Port 1 Channel Count.....	512
DMX Output Port 2 Start Channel.....	513
DMX Output Port 2 Channel Count.....	512

### MIDI

MIDI Input Port EMIDI ID.....	1
MIDI Output Port EMIDI ID.....	2

### Remote Macro

Remote Macro 1 System ID.....	0
Remote Macro 1 Macro ID.....	1901
Remote Macro 2 System ID.....	0
Remote Macro 2 Macro ID.....	1902
Remote Macro 3 System ID.....	0
Remote Macro 3 Macro ID.....	1903
Remote Macro 4 System ID.....	0
Remote Macro 4 Macro ID.....	1904
Trigger Out System ID.....	0
Trigger Out Trigger ID.....	1

### Serial Button Protocol

Use serial port for button protocol.....	Disabled
Baud Rate.....	115200